



Thermal Imaging Camera

Online condition monitoring

DM60

384×288 uncool FPA detector

Temperature measurement



DM60 Thermal Imaging Camera



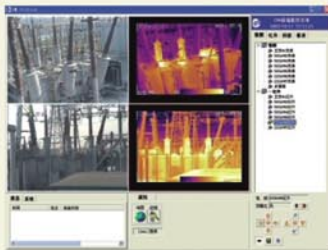
PCB detection

DM60 is an online condition monitoring infrared thermal imaging camera developed with new generation uncooled FPA detector. With high thermal sensitivity, clear IR image, accurate temperature and easy operation, DM60 is suitable for a wide variety of applications of process condition non-contact temperature measure, quick Fault Diagnosis and heat field analysis in field of industry, electricity, electronic condition state detection.



LAN port

DM60



Apply to industry, electricity etc. process stat monitoring



Parameter

Item		DM60
Detector characteristics	Detector type	Uncooled FPA microbolometer
	Array size/format	384×288
Image characteristics	Field of view/min focus distance	16°×12°/0.5m
	Spatial resolution (IFOV)	0.88mrad
	Thermal sensitivity	≤0.06℃@30℃
	Frame rate	50/60Hz
	Focus	Auto/Manual electric focus
	Spectral range	8-14μm
Measurement	Temperature ranges	-20℃- +180℃, extend to +600℃
	Accuracy	± 2 °C or ± 2% of reading, Whichever is greater
	Measurement correction	Automatic/manual
	Measurement mode	Up to 4 movable spots. Up to 3 movable areas (maximum, minimum and average temperatures). Line profile. Isotherm. Temperature difference. Alarm(color)
	Color palette	11 palettes changeable(Iron, Rainbow, Grey and Grey inverted, etc.)
	Image adjustment	Auto/manual gain and brightness
	Setup functions	Temperature unit, language, IP address
	Emissivity correction	Variable from 0.01 to 1.0
	Ambient temperature correction	Automatic corrections according to user input
Image storage	Atmospheric transmission correction	Automatic correction according to user input object distance, relative humidity , ambient temperature
	Raw image capture	Raw images real time transfer via client control software, the images are analyzable and temperature measurable
Power supply	Image storage	MPEG-4 images storage, single Single image capture, BMP
	External power	10-15V DC
Environment	Power consumption	≤6W(Normal operating at 25℃ ambient temperature condition)
	Operating temperature	-15℃- +50℃
Physical characteristics	Humidity	≤90%non-condensing
	Weight	≤1.09Kg (Exclude lens)
	Dimensions	260mm ×92mm ×82mm
Interface	External DC input	Yes
	Analog video output	PAL/NTSC
	Digital video output	RJ-45 ethernet output, MPEG-4 digital video/raw temperature measured
	Remote control interface	RS485
	Ethernet interface	RJ-45 ethernet output for thermal image, data tranfer, and camera control
Alarm interface	Switch signal output	

▲ The information contained in this document is subject to change without notice